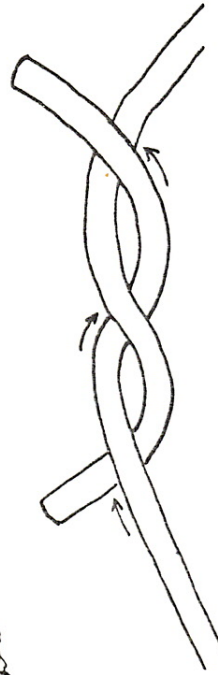
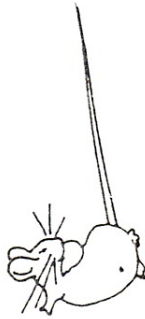


# Reef Knot

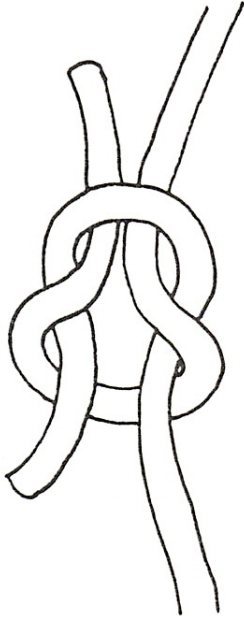
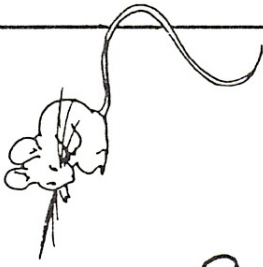
## Use a reef knot:

- to join the ends of the same piece of rope
- to join two pieces of rope or string of the same thickness
- when you want a flat, neat knot such as when tying a bandage
- to tie your scarf
- to fix a broken shoe lace
- to make a long string from several short ones.

**Don't** use a reef knot for joining two ropes of different thicknesses. **Don't** use a reef knot if your rope is made of a slippery synthetic, because it could slip undone.



1. Cross the left end over the right end, then under.



2. Cross the right end (it was the left end in step one) over the left end, then under.



3. Pull to tighten.

**Remember:** left over right and under, right over left and under.

**How did the reef knot get its name? It's a knot used to reef a sail on a boat, to reduce the size of the sail.**

**A reef knot is also called a square knot, because it looks neat and square.**